

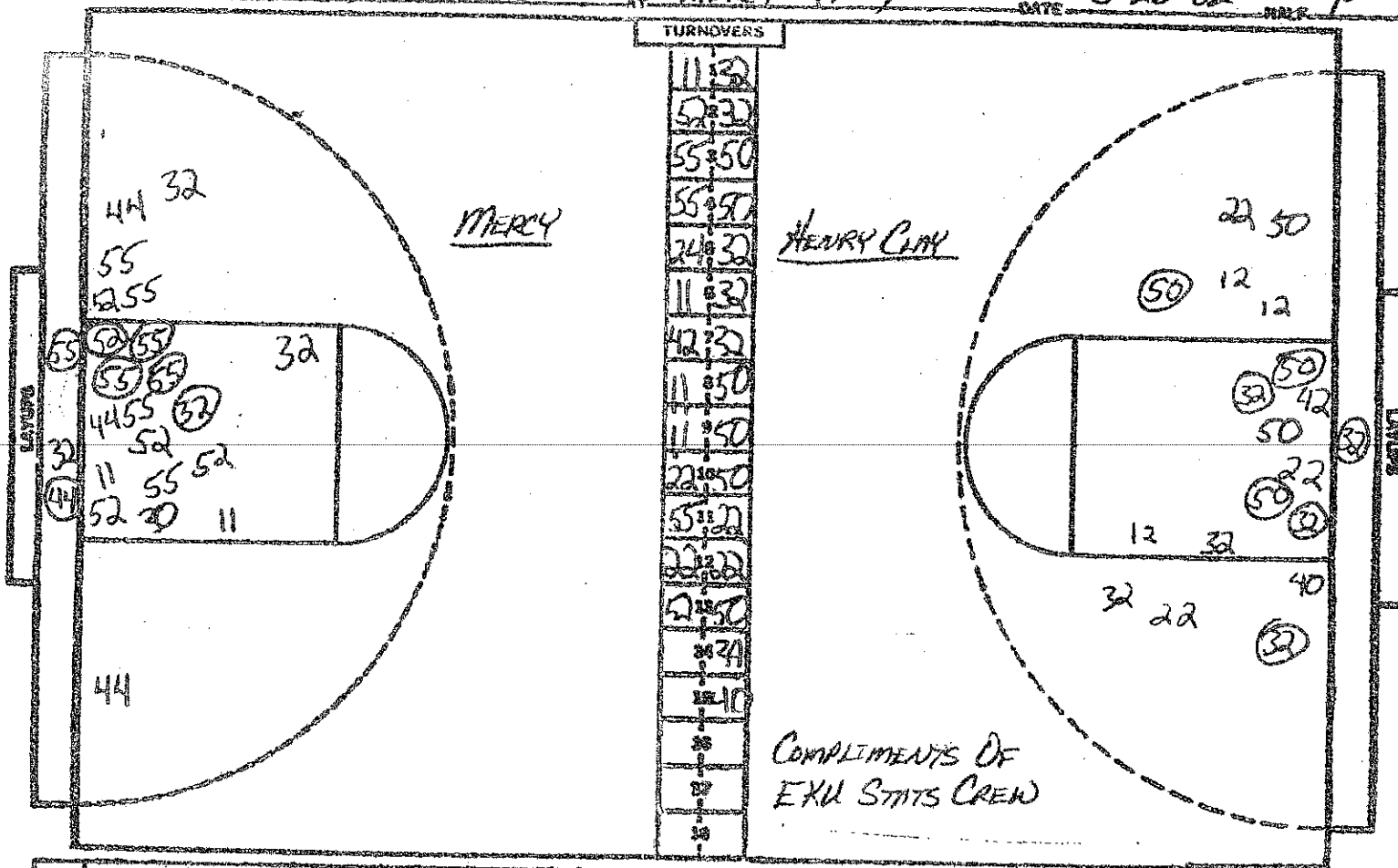
CAGE CHART

HENRY CLAY (11TH)

MERCY (17TH)

DATE 3-20-82

PER 1ST



NO.	MERCY	FG-FGA	FT-FTA	RB	P	TP	A
11	GIORJA MONTMAD	0-1	0-0	2	2	0	2
24	CINDY DWESTORE	0-1	0-0	0	0	0	0
52	TILL SANDER	1-6	7-8	5	1	9	1
44	GEAN FELDKAMP	1-4	0-0	1	2	2	0
55	MARZA PASCHLWISER	4-10	4-6	5	0	12	0
42	Tulie Baron	0-0	0-0	0	2	0	0
32	Margie Wicke	1-5	3-4	1	1	5	0
33	Pat Smith	0-0	0-0	1	0	0	0
30	MADONNA TISCHEWITZ	0-2	3-4	2	1	3	0
		-	-				
		-	-				
		-	-				
		-	-				
		-	-				
		-	-	1 OR			
TOTALS		7-19	17-22	18	9	30	3

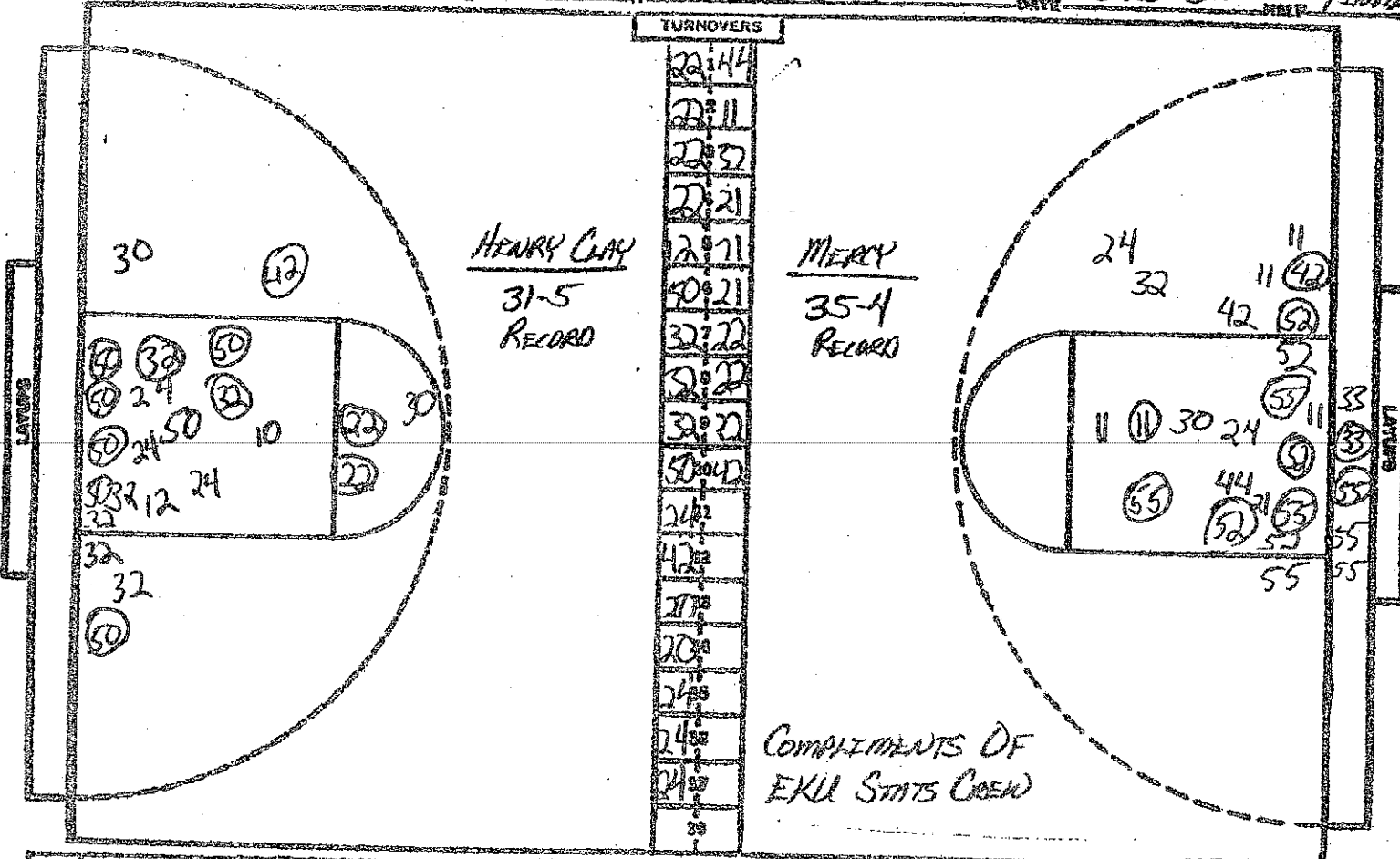
PERCENTS 24.1 77.3 0 TEAM REBOUNDS (NOT IN TOTAL)

NO.	HENRY CLAY	FG-FGA	FT-FTA	RB	P	TP	A
32	LESLIE ANDREWS	4-6	0-0	8	2	8	0
50	BELITTA COWLEY	3-5	1-3	6	2	7	0
40	BETH LEONARD	0-1	0-0	3	2	0	0
22	LISA MOSES	0-3	4-4	1	2	4	2
12	SHEILA OWEN	0-3	0-0	1	1	0	1
42	Marlene Sims	0-1	1-2	3	2	1	0
34	Taya Tichenor	0-0	0-0	0	1	0	0
24	Kathy Jones	0-0	0-1	1	0	0	0
		-	-				
		-	-				
		-	-				
		-	-				
		-	-				
		-	-				
		-	-	2 OR			
TOTALS		7-19	6-10	25	12	20	3

PERCENTS 36.8 60.0 0 TEAM REBOUNDS (NOT IN TOTAL)

SCORE BY Mrs. 10-20=30
 OFFICIALS: WALTER JOHNSON & WAYNE BROWNING
 ATTENDANCE: SESSON SEVEN EST. 3,100

HENRY CLAY 11-9=20
 TECHNICAL - CROLEY (R)



NO.	HENRY CLAY	FG-FGA	FT-FTA	REB	P	TP	A
32	LESLIE NICHOLS	6-12	0-0	12	3	12	3
50	BELITTA CROLEY	8-13	4-6	14	5	20	0
40	BETH LEONARD	0-1	0-0	3	5	0	1
22	LISA MOSES	2-5	4-4	1	3	8	3
12	SHAELIA OWEN	0-4	0-0	2	1	0	2
42	MARLENE SIMS	1-2	1-2	3	2	3	0
34	TOYA TSCHEKOR	0-0	0-1	0	1	0	1
10	FELICIA FISHER	0-1	0-0	0	1	0	0
24	KATHY JONES	0-3	0-1	3	2	0	2
14	SAN KISSA	0-0	0-0	0	0	0	0
30	CHRISTA GANNON	0-2	0-0	1	0	0	0
40	KEV RICHARDSON	0-0	0-0	0	0	0	0
		-	-				
		-	-	2	NA		
TOTALS		17-43	9-14	41	23	43	12
PERCENTS		39.5	64.3	2	TEAM REBOUNDS (NOT IN TOTAL)		

NO.	MERCY	FG-FGA	FT-FTA	REB	P	TP	A
11	GLORIA MONTANO	1-6	2-2	3	3	4	3
24	CINDY DUMSTORF	0-3	0-0	0	2	0	1
52	JILL SANDER	4-11	7-8	8	1	15	1
44	GINA FEUDKAMP	1-6	0-0	1	3	2	1
55	MARITA BOSCHTAGER	8-18	16-18	12	1	32	0
42	JULIE BROWN	1-1	0-0	1	2	2	0
32	WINGIE WICKRE	1-6	5-6	3	1	7	1
33	PAT SMITH	1-2	0-2	5	1	2	0
30	MADONNA TSCHEKOR	0-3	3-5	2	1	3	0
22	PAM SMITH	0-0	0-0	1	1	0	0
21	NANCY FULLER	0-1	0-0	0	0	0	0
		-	-				
		-	-				
		-	-	2	NA		
TOTALS		17-57	33-41	38	16	67	7
PERCENTS		29.8	80.5	2	TEAM REBOUNDS (NOT IN TOTAL)		

SCORE BY PERCENTS
 OFFICIALS: WALTER JOHNSON & WAYNE BROWNING
 ATTENDANCE: SESSON SEVEN EST. 3,100

SCORE BY PERCENTS
 OFFICIALS: WALTER JOHNSON & WAYNE BROWNING
 ATTENDANCE: SESSON SEVEN EST. 3,100